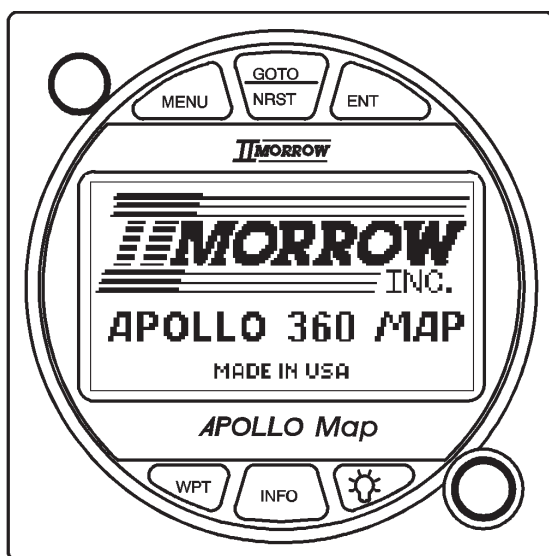


# Apollo 360 Map Display

## *Quick Reference Guide*



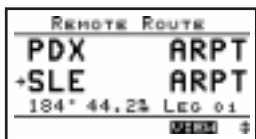
Use this **Quick Reference Guide** to quickly review:

- How to use the six navigation screens, with special information on:
  - Moving maps Zoom feature
- How to view the nearest waypoints using the GOTO/NRST key
- How to get extra waypoint information using the INFO key
- How to create custom waypoints with the WPT key
- How to use features available with the MENU key

### **Power Up**

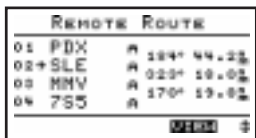
The Apollo 360 Map relies on inputs from a host navigation device to establish its position. When the unit is powered on, it will first look for an input from the host device. If the input is present, it looks for position and route information. With position and route information available, the Apollo 360 Map is ready to begin assisting in navigating a trip. Refer to the *Users Guide — Getting Started* section for additional details..

The six navigation screens form the core of the Apollo 360 interface, and are displayed whenever not accessing the MENU, GOTO/NRST, WPT, or INFO functions. Rotate the LARGE knob to view each screen. For full details refer to the User's Guide — Chapter: Topic as indicated below.



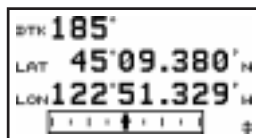
**Routes** (two screens available)

The arrow indicates the current TO waypoint. Additional information for using routes is provided on the next page. Refer to *Navigating a Trip: Route* subsections. Go to Screen Controls under the Main Menu to select either the 1-Leg or 3-Leg route screen



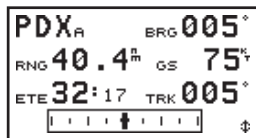
**Current messages**

Press the ENT key to view additional messages. Refer to *Navigating a Trip: Current Messages Screen*.



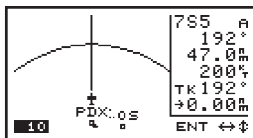
**Present position**

Refer to *Navigating a Trip: Present Position Screen*.



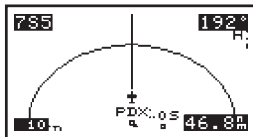
**General navigation information**

Refer to *Navigating a Trip: Bearing / Range / Ground Speed Screen*.



**Moving maps** (two screens)

The lower left corner of the moving maps shows the current map Zoom scale, which is changed by rotating the SMALL knob. The Auto Zoom scale automatically zooms in on the TO waypoint as you fly. Refer to the *Navigating a Trip: Moving Map* sections, and *Navigating a Trip: Zooming In or Out* and *Auto Zoom* sections.



### Using Routes

The Apollo 360 Map displays route information from the host navigation device in either a 1-Leg or 3-Leg route screen. The screen shows either two or four waypoints (depending on the screen selected) of the current route, as well as the desired track and distance between the displayed waypoints. The 1-Leg screen uses larger characters for easier viewing. The 3-Leg screen provides more information on a single screen.

To change the route screen selection, press the MENU key. Rotate the LARGE knob to select **Screen Controls** then press the ENT key. Rotate the SMALL knob to select 1-Leg or 3-Leg and press the ENT key twice to return to the navigation mode.



|                            |   |      |       |
|----------------------------|---|------|-------|
| PRESS <b>ENTER</b> TO QUIT |   |      |       |
| +SLE                       | A | 143° | 5.37% |
| 755                        | A | 204° | 10.2% |
| MMV                        | A | 323° | 12.6% |
| 759                        | A | 030° | 16.9% |
| <b>QUIT</b>                |   | ↔↔   |       |

To search for **nearest waypoints**, press the GOTO/NRST key. The nearest 30 waypoints will be displayed in order of distance from your present position. The waypoint type, bearing to the waypoint and range to the waypoint also shows.. Refer to *Navigating a Trip: Searching for Nearest Waypoints*.



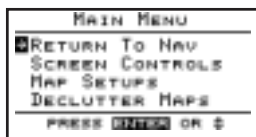
|                           |     |        |       |
|---------------------------|-----|--------|-------|
| PRESS <b>INFO</b> TO EXIT |     |        |       |
| PDX                       | A   | 012°   | 7.25% |
| PORTLAND INTL             |     |        |       |
| PORTLAND                  |     |        |       |
| ELEV                      | 27' | OR USA |       |
| AVGAS/JET PUBLIC          |     |        |       |
| <b>INFO</b>               |     | ↔      |       |

To view **waypoint information**, press the INFO key. When displaying navigation screens, information is for the TO waypoint. When viewing the nearest waypoints, rotate the LARGE knob to select a waypoint then press the INFO key to display information for that waypoint. Rotate the LARGE knob to view additional information screens. Press the INFO or ENT keys to exit the Info screen. Refer to the *User's Guide — Waypoint Database*.



|                              |          |       |       |
|------------------------------|----------|-------|-------|
| PRESS <b>ENTER</b> TO CREATE |          |       |       |
| WPT                          | 0001     | AT    | 012°  |
| 45°                          | 28.901'N | 0.22% |       |
| 122°                         | 41.245'W |       |       |
| RAD                          | 189°     | DIST  | 7.55% |
| PDX                          | WOR      |       | ↔↔    |

**Create User waypoints** at any time by pressing the WPT key. Change the waypoint information by rotating the LARGE and SMALL knobs. When complete, press the ENT key. Refer to *Navigating a Trip: Creating Waypoints*.



The MENU key accesses the Main Menu, which provides system setup information. While viewing this screen, rotate the LARGE knob to select a menu option, then press the ENT key to view the option screen.

*To return to the navigation screens at any time, press the MENU key, then press the ENT key.*

### **Main Menu Options**

**Return To Nav:** Return to the navigation screens

**Screen Controls:** Change between 1-leg and 3-leg route display, change contrast and brightness settings

**Map Setups:** Choose moving map display options for airspaces, route paths, and map orientation

**Declutter Maps:** Choose which types of waypoints are displayed on the moving maps and in the nearest waypoints list

**Track Point Hist:** Choose whether a trail showing where you have been is displayed on the moving maps

**Arrival Alerts:** Choose the waypoint arrival alert radius

**Airspace Alerts:** Choose the airspace alert options for distance and time

**Countdown Time:** Start a countdown timer to give an alert message

**Display Units:** Choose distance, altitude, and position units of display for navigation

**User Wpt Mgmt:** Modify or delete waypoints that were created with the WPT feature

**System Info 1:** View current version information

Refer to the *Users Guide — Menu Function Options* for detailed information.